



ISSN Print: 2394-7489
ISSN Online: 2394-7497
IJADS 2017; 3(4): 96-102
© 2017 IJADS
www.oraljournal.com
Received: 08-08-2017
Accepted: 10-09-2017

Mohammad Altaf Tantray
PG Scholar, Department Of
Prosthodontics, Govt Dental
College Srinagar, Jammu and
Kashmir, India

Sandeep Koul Bali
Professor & Head, Of
Prosthodontics Srinagar, Govt
Dental College, Srinagar, Jammu
and Kashmir, India

Shabir Ahmad Shah
Professor & Head, Department
Of Dental Materials, Govt.
Dental College Srinagar, Jammu
and Kashmir, India

A study comparing the occlusal plane in dentulous and edentulous subjects in relation to maxillomandibular space in Kashmiri population

Mohammad Altaf Tantray, Sandeep Koul Bali and Shabir Ahmad Shah

Abstract

Background: Several techniques have been documented to orient the occlusal plane properly in edentulous patients. Esthetic and phonetic considerations help orient the occlusal plane anteriorly. The intraoral landmarks that help in locating the occlusal plane posteriorly are retromolar pad, lateral border of tongue, parotid papilla and rima oris.

Materials and Methods: After obtaining signed informed consent, the lateral cephalograms of selected participants were taken in the department of Oral Medicine and Diagnostic Radiology, Government Dental College and Hospital, Srinagar Jammu & Kashmir, India. Tracing of each cephalogram was made using a tracing sheet with a 4-H pencil. It consists of the patients who attended the Department of Prosthodontics and Crown & Bridge, Government Dental College and Hospital, Srinagar.

The occlusal plane was adjusted parallel to interpupillary line anteriorly and Camper's Plane posteriorly during denture fabrication. During the post insertion period, a piece of classic stainless steel matrix band no. 18 that was 10 mm x 4 mm wide and 0.005 inches thick was placed on the lower right occlusal plane with tape tips so that the upper border of the band was aligned with the tips of the buccal cusps of the first and second premolars and the mesio-buccal cusp of the first molar. A strip of anterior band material 0.003 inches thick was placed longitudinally on the maxillary right central incisor and mandibular right central incisor, from the gingival margin on the labial aspect, over the incisal edge, and to the gingival margin on the lingual/ palatal aspects. Right lateral cephalograms were obtained while the dentures were placed in the mouth and the jaws were approximated in centric relation.

Results: The measurements for every patient were recorded and the values obtained were subjected to statistical analysis, including;

1. Mean
2. Standard deviation
3. Co-efficient of variation
4. F-test (Analysis of variance ANOVA).
5. Students t- test

Conclusion: A significant association exists between the inclination of the occlusal plane and maxillary plane in relation to maxillomandibular space dimensions. In the long and low subtype of maxillomandibular space of the dentulous group, the occlusal plane tends to be parallel to the maxillary plane. While as, in the short and high subtype the occlusal plane is more angulated in relation to the maxillary plane.

The occlusal plane inclination to the maxillary plane in long and low type is low while as, it is higher in short and low subtype of edentulous group.

Keywords: A study comparing, maxillomandibular, Kashmiri population

Introduction

Several techniques have been documented to orient the occlusal plane properly in edentulous patients. Esthetic and phonetic considerations help orient the occlusal plane anteriorly. The intraoral landmarks that help in locating the occlusal plane posteriorly are retromolar pad, lateral border of tongue, parotid papilla and rima oris.

The camper's plane is defined as the line joining the inferior border of ala of nose to the superior border of tragus as per Boucher. As per Sprately, line from centre of ala to centre of tragus while Ismail and Bowman describe it as the line from al to centre of tragus of external auditory meatus.

Correspondence

Mohammad Altaf Tantray
PG Scholar, Department Of
Prosthodontics, Govt Dental
College Srinagar, Jammu and
Kashmir, India

Aims and objectives: this study was conducted to compare the occlusal plane inclination in relation to maxillomandibular space in dentulous and edentulous subjects using reliable and constant bony landmarks.

Materials and methods:

Source of data:

Method of data collection:

Inclusion Criteria

1. Subjects with class I molar relationship.
2. Subjects with second molar erupted and in occlusion.
3. Subjects with age above 19, as facial growth will be essentially complete.
4. Subjects with normal ridge relation.
5. Subjects with orthognathic profile.

Exclusion Criteria

1. Subjects with apparent loss of tooth structure due to attrition or fracture
 2. Subjects with congenital or maxillofacial defects
 3. Subjects with symptoms of temporomandibular disorders, facial asymmetries, congenital facial defects.
 4. Subjects with parafunctional habits or bruxism.
 5. Subjects with occlusal discrepancies of centric occlusion.
- Subjects having orthodontic, orthognathic and reconstructive surgeries done.

Armamentarium

1. New Tom Giano with cephalometric arm (Lateral High Frequency, Stationary Anode: 60-90 kV; 1-10 mA 0.5 mm focal spot dimension, IEC 60336-1993, Detector height (mm) for Ceph: 220, X-ray emission time for Lateral ceph: 3.4s)
2. Lateral cephalograms X-ray film [Green Sensitive, KODAK –TMAT].
3. Automatic X-ray film processor.
4. Tracing sheet [One side matte, 50 micrometer thick].
5. 4 H pencil.
6. X-ray viewer.
7. Cellophane tape.
8. Paper tape.
9. Compass.
10. Divider.
11. Scale.
12. Complete dentures.
13. Eraser.

Methodology: After obtaining signed informed consent, the lateral cephalograms of selected participants were taken in the department of Oral Medicine and Diagnostic Radiology, Government Dental College and Hospital, Srinagar Jammu & Kashmir, India. Tracing of each cephalogram was made using a tracing sheet with a 4-H pencil.

In this study, Camper's plane was used to orient the occlusal plane in edentulous subjects. A comparison of the natural occlusal plane in dentulous subjects and the established occlusal plane in edentulous patients was then made cephalometrically based on the dimensions of the maxillomandibular space, namely, height, length, and maxillomandibular angle. Maxillomandibular space length was measured at the level of the occlusal plane. It was defined as the distance along the occlusal plane from the intersection of the plane with the posterior pharyngeal wall to the point where the occlusal plane meets the most lingually placed incisor tooth. Maxillomandibular space height was defined as

the perpendicular distance from Menton to the maxillary plane. Maxillomandibular angle was defined as the angle between the maxillary plane and the mandibular plane, which was extended beyond the posterior pharyngeal wall for the convenience of measurement.

Dentulous Group

It consists of 40 students of Government Dental College & Hospital, Srinagar. Right lateral cephalograms were taken with mandible in maximum intercuspation.

Edentulous Group

It consists of the patients who attended the Department of Prosthodontics and Crown & Bridge, Government Dental College and Hospital, Srinagar.

The occlusal plane was adjusted parallel to inerpupillary line anteriorly and Camper's Plane posteriorly during denture fabrication. During the post insertion period, a piece of classic stainless steel matrix band no. 18 that was 10 mm x 4 mm wide and 0.005 inches thick was placed on the lower right occlusal plane with tape tips so that the upper border of the band was aligned with the tips of the buccal cusps of the first and second premolars and the mesio-buccal cusp of the first molar. A strip of anterior band material 0.003 inches thick was placed longitudinally on the maxillary right central incisor and mandibular right central incisor, from the gingival margin on the labial aspect, over the incisal edge, and to the gingival margin on the lingual/ palatal aspects. Right lateral cephalograms were obtained while the dentures were placed in the mouth and the jaws were approximated in centric relation.

Cephalometric analysis

All lateral cephalograms were traced with 4-H pencil. The cephalometric points, planes and angles traced are as under:

A). Points

1. Anterior Nasal Spine (ANS).
2. Posterior Nasal Spine (PNS).
3. Gonion (Go).
4. Menton (Me).
5. T-point: the point where occlusal plane meets the posterior border of soft palate shadow.

B). Planes

1. Maxillary plane (Max. P): the plane that joins the anterior nasal spine with posterior nasal spine
2. Mandibular plane (Mnd.P): that plane that joins Gonion (Go) with Menton(Me).
3. Occlusal plane(Occ.P)

(a) Dentulous occlusal plane: A plane that extends from the point midway between the incisal tips of maxillary and mandibular incisors to the point midway between mesiobuccal cusps of maxillary and mandibular incisors.

(b) Edentulous occlusal plane: A plane that extends from the incisal tip of maxillary central incisor to the mesiobuccal cusp tip of lower right molar.

C) Linear measurement:

1. Maxillomandibular space length (L): It was defined as the distance along the occlusal plane from the intersection of the plane with the posterior pharyngeal wall to the point where the occlusal plane meets the most lingually placed

incisor tooth.

2. Maxillomandibular space height (H): defined as the perpendicular distance from Menton to the maxillary plane.

D) Angular Measurement



Fig 1



Fig 2

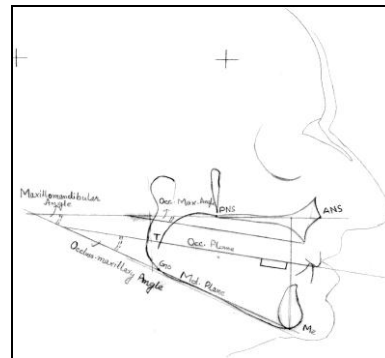
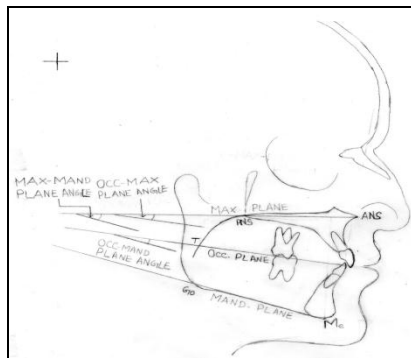


Fig 3: Points, planes and angular measurements in dentulous and edentulous subjects

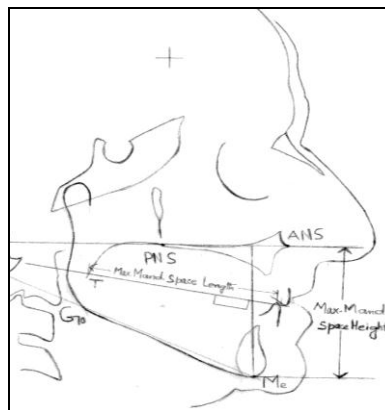
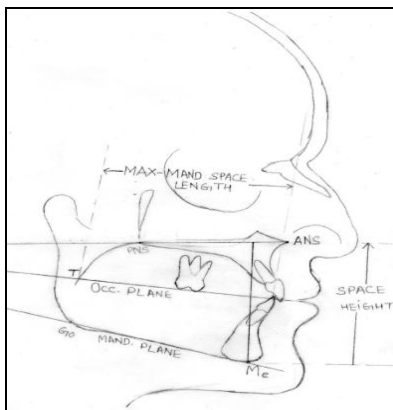


Fig 4: maxillomandibular space length and height in dentulous and edentulous subjects

Results

The measurements for every patient were recorded and the values obtained were subjected to statistical analysis, including;

1. Mean
2. Standard deviation
3. Co-efficient of variation
4. F-test (Analysis of variance ANOVA).
5. Students t- test

Arbitrary mean values were taken for maxillomandibular space height and length. Maxillomandibular space heights of 70mm or more are taken as high while those under 70mm are

1. Maxillary-occlusal plane angle: the angle the occlusal plane makes with maxillary plane.
2. Mandibular-occlusal plane angle: the angle the occlusal plane makes with mandibular plane.
3. Maxillomandibular plane angle: the angle the maxillary plane makes with mandibular plane.

were considered as low. Maxillomandibular space length of 80mm or more are considered as long and those under 80mm are considered as short.

On the basis of maxillomandibular space dimensions, each group of dentulous and edentulous is divided into four subtypes mentioned as under

1. Long and low
2. Long and high
3. Short and low
4. Short and high

Parametric measurements for both the dentulous and edentulous groups are shown in tables

Table 1: Comparison Based On Angular Measurements In Two Groups

Angular Measurements	Dentulous group		Edentulous group		t-Value	p-Value
	Mean	SD	Mean	SD		
Occlusomaxillary angle	6.7	3.612	8.14	4.282	1.623	0.109
Occlusomandibular angle	8.96	3.043	10.38	5.136	1.497	0.138
Maxillomandibular angle	16.86	4.571	18.11	6.426	1.003	0.319

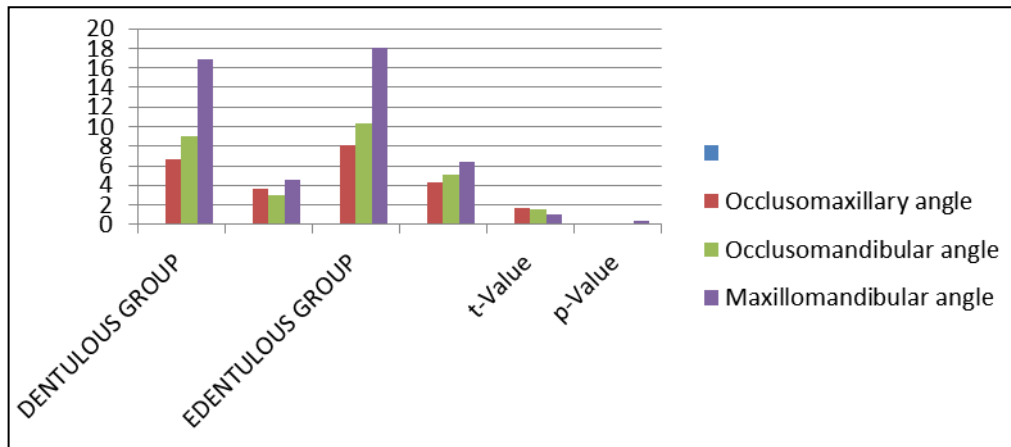


Table 2: Comparison Based On Occlusomaxillary Plane Angles In Relation To Length and Height Of Maxillomandibular Space Between Two Groups

	Dentulous Group		Edentulous Group		t-Value	p-Value
	Mean	SD	Mean	SD		
Long and low	4.32	2.228	3.10	1.673	1.083	0.297
Long and high	8.11	2.012	5.00	1.813	3.332	0.005*
Short and low	6.12	4.533	10.21	4.531	2.45	0.021*
Short and high	10.5	1.958	9.65	2.381	0.776	0.449

*Statistically Significant Difference (P-value<0.05)

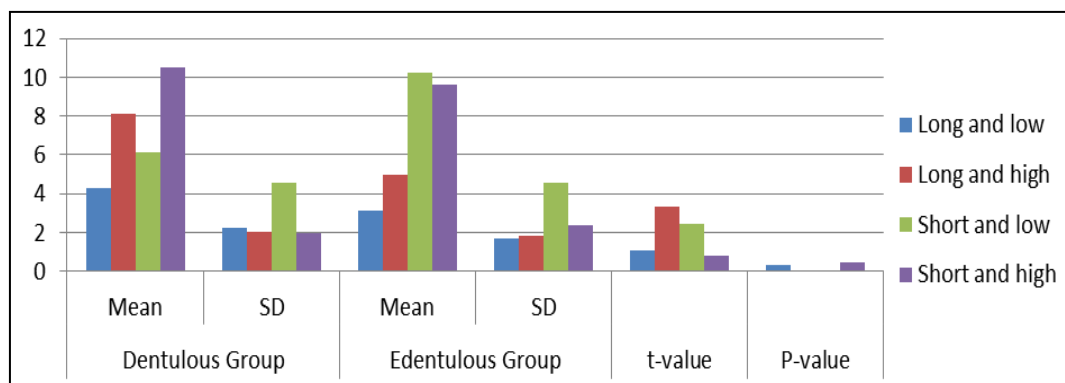


Table 3: Intragroup comparison of occlusomaxillary plane angles in edentulous group

	Mean	SD	Min	Max	Group Compared	P-value\$
Long and low (1)	3.10	1.673	1	5	1 vs 2	0.332
Long and high (2)	5.00	1.813	2	7	1 vs 3	<0.001*
Short and low (3)	10.21	4.531	0	19	1 vs 4	0.001*
Short and high (4)	9.65	2.381	7	14	2 vs 3	0.001*
Statistically Significant Difference (P-value<0.05), \$P-value by ANOVA					2 vs 4	0.006
					3 vs 4	0.683

Table 4: Intragroup Comparison of Occlusomaxillary Plane Angles in Dentulous Group

	Mean	SD	Min	Max	Group Compared	P-value\$
Long and low (1)	4.32	2.228	0.0	7.5	1 vs 2	0.010*
Long and high (2)	8.11	2.012	5.0	10.0	1 vs 3	0.169
Short and low (3)	6.12	4.533	-3.0	14.0	1 vs 4	<0.001*
Short and high (4)	10.5	1.958	7.5	13.0	2 vs 3	0.150
* Statistically Significant Difference (P-value<0.05), \$P-value by ANOVA					2 vs 4	0.138
					3 vs 4	0.005*

Discussion

The ideal position of the teeth in complete dentures is the same as that of the natural teeth. Facial harmony is achieved when teeth are set in their proper relation^[14].

The position of the occlusal plane of orientation forms the basis for ideal tooth arrangement, and should fulfill the necessary mechanical, esthetic, and phonetic requirements, and aid respiration and deglutition^[80].

Ausburger's^[9] study indicated a strong correlation between the occlusal plane and the lateral aspects of facial types.

According to the results of my study, the occlusal plane inclination is related to the growth pattern of the face. The occlusal plane inclination is less inclined in the hypodivergent patients than the hyperdivergent patients.

In Von Niekerk's^[32] study, the angle formed by the functional occlusal plane and the ala-tragus line had a mean of +2.45 degrees, a standard deviation of 3.24 degrees, and a range of +8-to -7.5 degrees. The mean difference between the planes was 2.45 degrees with a standard deviation of 3.24 degrees. Such relatively narrow limits showed a close relationship between the two planes.

Our results showed that the occlusal plane is almost parallel to maxillary plane in long and low subtype with mean of 3.10 and more angulated in short and low type maxillomandibular space of the edentulous patients with mean of occlusomaxillary angle of 10.21⁰ when the occlusal plane is oriented parallel to Camper's plane.

Hercules C. Karkazi^[39] mentioned in his study that no strong linear correlation ($p > 0.05$) between the following variables: (a) the length of Cook's plane to Cook's occlusal plane angle, (b) the length of the maxillary plane to the maxillary occlusal plane angle, and (c) the PO Na AN6 angle to the occlusal Frankfort plane angle; (2) no parallelism between the occlusal and HIP plane with a mean angle of 4.57 degrees, SD 2.57 degrees, and range of 0 to 9.5 degrees; and (3) no correlation between the predicted and clinically determined occlusal planes ($r = 0.267$, $t = 1.797$, $p = 70.05$).

In the present study, it was seen that the occlusal plane is closely related to the maxillary plane.

Seifert *et al*^[70] have concluded Occlusal plane-Frankfort Horizontal plane angulation as 11.42 in dentulous subjects whereas Celebic *et al*^[61] proposed it as 9.43 and 8.53 in dentulous and edentulous subjects.

Karkazis and Polyzois^[85] correlated Occlusal plane with Camper's planes in dentulous and edentulous subjects and reported the inclination of artificial Occlusal plane-Camper's plane (10.00 ± 3.25) almost the same as the inclination of natural Occlusal plane-Camper's plane (7.00 ± 2.88).

Our study confirmed that long and low subtype has the occlusal plane parallel to maxillary plane with mean of 4.32⁰ plus minus 2.228⁰ in dentulous group and the occlusal plane is almost parallel to maxillary plane in long and low subtype with mean of 3.1 degrees in edentulous group

Conclusion

A roentgenographic comparative study was conducted in the dentulous and edentulous subjects to determine the proper location of the occlusal plane in relation to the maxillomandibular space. The results from both the dentulous and edentulous subjects indicate that a close angular affinity exists between the occlusal plane and the maxillary plane.

A significant association exists between the inclination of the occlusal plane and maxillary plane in relation to maxillomandibular space dimensions. In the long and low

subtype of maxillomandibular space of the dentulous group, the occlusal plane tends to be parallel to the maxillary plane. While as, in the short and high subtype the occlusal plane is more angulated in relation to the maxillary plane.

The occlusal plane inclination to the maxillary plane in long and low type is low while as, it is higher in short and low subtype of edentulous group.

References

- Swenson MG. Complete Denture. 2nd ed. St. Louis: Mosby Company. 1990, 177-80.
- Glossary of Prosthodontic Terms. 8th ed. St. Louis: CV Mosby, 2005.
- Zarb GA, Bolender CL, Carlsson GE. Boucher's Prosthodontic Treatment for Edentulous Patients. 11th ed. St. Louis: Mosby Company. 2003; 3-46:183-96.
- Annals of Medical and Health Sciences Research. 2014; 4(3).
- Celebic A, Valentic-Peruzovic M, Kraljevic K, Brkic H. A study of the occlusal plane orientation by intra-oral method. J Oral Rehabil. 1995; 22:233-236.
- Carey PD. Occlusal plane orientation and masticatory performance of complete dentures. J Prosthet Dent. 1978; 39:368.
- Robert M. From prospective of facial esthetics in dental treatment planning. J Prosthet Dent. 1996; 75:169.
- Robert B. Sloane, A guide to the orientation of the plane of occlusion. Journal of prosthetic dentistry. 1953; 3(1):53-66.
- Russell h. Augsburg, occlusal plane relation to facial type. Journal of prosthetic dentistry. 1953; 3(6):755-770.
- Howard J. Berkeley, the labial and buccal accessory muscles of mastication. Journal of prosthetic dentistry. 1954; 4(3):327-34.
- Robert Ricketts M. the role of cephalometrics in prosthetic diagnosis. Journal of prosthetic dentistry. 1956; 6(4):488-503.
- Anders Olsson. relationship of various skull reference lines. Journal of prosthetic dentistry. 1961; 11(6):1045-50.
- Peter Coccaro J. cephalometric analysis of morphologic face height. Journal of prosthetic dentistry. 1965; 15(1):35-44.
- Hartonov The occlusal plane in relation to facial types. Journal of prosthetic dentistry. 1967; 17(6):549-59.
- Yahia Ismail H. Position of the occlusal plane in natural and artificial teeth. Journal of prosthetic dentistry. 1968; 20(5):407-11.
- Caleb Hull A. A cephalometric approach to establishing the facial vertical dimension. Journal of prosthetic dentistry. 1968; 20(1):37-42.
- Anzelm Langer. Occlusal perception after placement of complete denture. Journal of prosthetic dentistry. 1968; 39(4):468-71. 19(3):246-51.
- Yahia H. Ismail, Position of the occlusal plane in natural and artificial teeth. 20(5):407-11.
- Bernard Levin. Results of a survey of complete denture procedures taught in American and Canadian dental schools. 22(2):171-77.
- Donald Lundquist O. Journal of prosthetic dentistry. 1970; 23(5):489-98.
- Earl Pound. An introduction to denture simplification. Journal of prosthetic dentistry. 1973; 29(6):599-607.
- Nikzad Javid S. A technique for the determination of occlusal plane. Journal of prosthetic dentistry. 1974;

- 31(3):270-72.
23. Peter L'Estrange R. A comparative study of the occlusal plane in dentulous and edentulous subjects. *Journal of prosthetic dentistry*. 1975; 33(3):495-503.
 24. Girard DiPietro J. Significance of the Frankfort-mandibular plane angle to prosthodontics. *Journal of prosthetic dentistry*. 1976; 36(6):625-35.
 25. Aboul-Ela M. Pre-extraction records of the occlusal plane and vertical dimension. *Journal of prosthetic dentistry*. 1977; 38(5):490-94.
 26. Girard DiPietro J. A study of occlusion as related to the Frankfort-mandibular plane angle. *Journal of prosthetic dentistry* 1977; 38(4):452-58.
 27. Carey PD. occlusal plane orientation and masticatory performance of complete dentures. *Journal of prosthetic dentistry*. 1978; 39(4):468-71.
 28. Jayashree Dikshit V. Muscle relaxant and rest position-A cephalometric study. *Journal of prosthetic dentistry*. 1979; 42(5):579-83.
 29. Hideaki Okane. The effect of anteroposterior inclination of the occlusal plane on biting force. *Journal of prosthetic dentistry*. 1979; 39(4):468-71.
 30. Brian Toolson L. Clinical measurement and evaluation of vertical dimension. *Journal of prosthetic dentistry* 1982; 47(3):236-241.
 31. Brian D. Monteith, A cephalometric method to determine the angulation of the occlusal plane in edentulous patients. *Journal of prosthetic dentistry*. 1985; 54(1):81-87.
 32. van Niekerk FW. The ala-tragus line in complete denture prosthodontics. *Journal of prosthetic dentistry*. 1985; 53(1):67-9.
 33. Foley PF. A study of the position of the parotid papilla relative to the occlusal plane. *Journal of prosthetic dentistry*. 1978; 53(1):124-26.
 34. Brian D. Monteith Cephalometrically programmed adjustable plane: A new concept in occlusal plane orientation for complete-denture patients. *Journal of prosthetic dentistry*. 1985; 54(3):388-94.
 35. Brian Monteith D. Evaluation of a cephalometric method of occlusal plane orientation for complete dentures. *Journal of prosthetic dentistry*. 1986; 55(1):64-9.
 36. Sam Adkisson R. Relating denture teeth to the occlusal plane. *Journal of prosthetic dentistry*. 1986; 55:274-77.
 37. Richard KK. Ow, The relationships of upper facial proportions and the plane of occlusion to anatomic reference planes. *Journal of prosthetic dentistry*. 1989; 61(6):727-33.
 38. Richard KK. Ow, Orientation of the plane of occlusion. *Journal of prosthetic dentistry*. 1990; 64(1):31-6.
 39. Hercules C. Karkazis Cephalometrically predicted occlusal plane: Implications in removable prosthodontics. *Journal of prosthetic dentistry*. 1978; 65:2: 258-64.
 40. Altug Kazanoglu, Determining the occlusal plane with the Camper's plane indicator. *Journal of prosthetic dentistry*. 1992; 67(4):499-01.
 41. Neena D'Souza L. A cephalometric study comparing the occlusal plane in dentulous and edentulous subjects in relation to the maxillomandibular space. *Journal of prosthetic dentistry*. 1996; 75(2):177-82
 42. Urbano A. Santana-Penin, The occlusal plane indicator: A new device for determining the inclination of the occlusal plane. *Journal of prosthetic dentistry*. 1998; 80(3):374-75.
 43. BASSI F. Evaluation of the utility of cephalometric parameters in constructing complete denture. Part I: placement of posterior teeth. *Journal of Oral Rehabilitation*. 2001; 28:234-238.
 44. Clayton A. Chan, A Review of the Clinical Significance of the Occlusal Plane: Its Variation and Effect on Head Posture. *International College of Craniomandibular Orthopedics (ICCMO) Anthology VIII*, 2007.
 45. Sumit V. Bedia, Determination of the occlusal plane using a custom-made occlusal plane analyzer: A clinical report. *J Prosthet Dent*. 2007; 98:348-352.
 46. Akira Yosano, Influence of mandibular fixation method on stability of maxillary occlusal plane after occlusal plane alteration. *Bull Tokyo dent coll*. 2009; 50(2):71-82.
 47. Shashinandan K Venugopalan, Determination of the relative parallelism of occlusal plane to three ala-tragal lines in various skeletal malocclusions: A cephalometric study. *Indian Journal of Dental Research*, 2012; 23(6).
 48. Amit Hindocha D. A cephalometric study to determine the plane of occlusion in completely edentulous patients. *Indian Journal of Dental Research*. 2013; 24(6).
 49. Reena Mittal, comparison of occlusal plane in dentulous and edentulous subjects. A cephalometric study. *Journal of prosthodontics society*. 2008; 8:195-01.
 50. Riccardo Rosati, The occlusal plane in the facial context: inter-operator repeatability of a new three-dimensional method. *International Journal of Oral Science*, 2012 4, 34–37.
 51. Nikola Petričević, Use of digital photography in the reconstruction of the occlusal plane orientation. *Med Glass* 2009; 6(2): 243-248.
 52. Sanath Shetty, Occlusal Plane Location in Edentulous Patients: A Review. *J Indian Prosthodont Soc (July-Sept 2013)* 13(3):142–148.
 53. Dr. Binod Acharya, Comparison of maxillary occlusal plane with various craniofacial reference lines in Nepalese and Indian young adults. *Orthodontic Journal of Nepal*. 2011; 1(1):16-19.
 54. Supriya Manvi. Occlusal Plane Determination Using Custom Made Broadrick Occlusal Plane Analyser: A Case Control Study. *International Scholarly Research Network ISRN Dentistry*, 2012.
 55. Nandeeshwar DB. A cephalometric study to determine the relation of ala-tragus line with different posterior reference points from a standard occlusal plane in completely edentulous patients. *Asian J Med Cli Sci*. 2012; 1(3).
 56. KOLLER MM. A comparative study of two methods for the orientation of the occlusal plane and the determination of the vertical dimension of occlusion in edentulous patients. *Journal of Oral Rehabilitation*, 1992; 19:413-425.
 57. Sandeep Kumar. A determination of occlusal plane comparing different levels of the tragus to form ala-tragal line or Camper's line: A photographic study. *J Adv Prosthodont*. 2013; 5:9-15.
 58. Sahoo S. systematic assessment of the various controversies, difficulties, and current trends in the reestablishment of lost occlusal planes in edentulous patients. *Annals of Medical and Health Sciences Research*. 2014; 4(3).
 59. Hasan Suat Gokce. Effects of complete denture wearing on the head posture and posterior airway space: A cephalometric study. *Journal of Dental Sciences*. 2011; 6: 6-13.
 60. Hans Wellens. Improving the concordance between various anteroposterior cephalometric measurements using Procrustes analysis. *European Journal of Orthodontics*. 2009, 503-515.
 61. CELEBIC. Occlusal plane orientation in Klinefelter

- syndrome (47, XXY males). *Journal of Oral Rehabilitation*. 1997; 942-946.
62. NISSAN J. Relationship between occlusal plane determinants and craniofacial structures. *Journal of Oral Rehabilitation*. 2003; 30:587-591.
 63. Sivakumar Jayachandran. Occlusal Plane Orientation: A Statistical and Clinical Analysis in Different Clinical Situations. *Journal of Prosthodontics*. 2008, 572-575.
 64. Prince Kumar. Reference guide for prosthetic occlusal plane orientation: An obscured dilemma. *European Journal of General Dentistry*. 2012; 1(2).
 65. Carole Abi Ghosen. Relationship between the occlusal plane corresponding to the lateral border of the tongue and ala-tragus line in edentulous patients. *J Contemp. Dent Pract*. 2012; 13(5):590-94.
 66. Prince Kumar. Reliability of Anatomic Reference Planes in Establishing the Occlusal Plane in Different Jaw Relationships: A Cephalometric Study. *J Indian Prosthodont Soc*. 2012.
 67. SINOBAD D. The position of the occlusal plane in dentulous subjects with various skeletal jaw-relationships. *Journal of Oral Rehabilitation*. 1988; 15:489-498.
 68. Al Quran FA. The position of the occlusal plane in natural and artificial dentitions as related to other craniofacial planes. *J Prosthodont*. 2010; 19(8):601-5.
 69. Lestrel PE, Kapur KK, Chauncey HH. A cephalometric study of mandibular cortical bone thickness in dentulous persons and denture wearers. *J Prosthetic Dent*. 1980; 43:89-94.
 70. Seifert D, Jerolimov V, Carek V, Ibrahimagic L. Relation of the reference planes for orientation of the prosthetic plane. *Acta Stomatol Croat*. 2000; 34:413-6.
 71. Vukusić N, Lapter M, Muretić Z. Change in the inclination of the occlusal plane during craniofacial growth and development. *Coll Antropol*. 2000; 24:145-50.
 72. Jayachandran S, Jayachandran CR, Varghese R. Occlusal plane orientation: A statistical and clinical analysis in different clinical situations. *J Prosthodont*. 2008; 17:572-5.
 73. Shigli K, Chetal BR, Jabade J. Validity of soft tissue landmarks in determining the occlusal Plane. *J Indian Prosthodont Soc*. 2005; 5:139-45.
 74. Mittal R. Comparison of the occlusal plane in dentulous and edentulous patients: A cephalometric study. *J Indian Prosthodont Soc*. 2008; 8:195-200.
 75. Sadr K, Sadr M. A study of parallelism of the occlusal plane and Ala- Tragus line. *J Dent Res Dent Clin Dent Prospects* 2009;3:107- 9
 76. Lahori M, Nagrath R, Malik N. A cephalometric study on the relationship between the occlusal plane, Ala- Tragus and camper's lines in subjects with angle's Class I, Class II and Class III occlusion. *J Indian Prosthodont Soc* 2012;13:494- 8
 77. Hall- Scott J. The maxillary- mandibular planes angle (MM degrees) bisector: A new reference plane for anteroposterior measurement of the dental bases. *Am J Orthod Dentofacial Orthop* 1994; 105:583-91
 78. Williams DR. Occlusal plane orientation in complete denture construction. *J Dent*. 1982; 10:311-6
 79. Singh G. Ala tragus line- A cephalometric evaluation. *Int J Prosthodont*. 2010; 1:1-5.
 80. Silverman SI. *Denture Prosthesis and Functional Anatomy of the Maxillofacial Structure*, J, PROS. DENT. 6: 305-331, 1956.
 81. Chow TW, Clark RKF, Darvell BW. Letter to the editor. *J PROSTHETIC DENT*. 1986; 55:662-3.
 82. Rich H. Evaluation and registration of the HIP plane of occlusion. *Aust Dent J* 1982; 27:162-8.
 83. Brian D. Monteith Cephalometrically programmed adjustable plane: A new concept in occlusal plane orientation for complete-denture patients. *J Prosthetic Dentistry* 1985 ;54(3) , 387-94
 84. Polyzois GL, Zissis AJ, Karkazis HC, Demetriou PP. Changes of vertical occlusal relationships in fast-boiled denture base resins: a comparative study. *Quintessence Dent Technol* 1986; 10:441-5.
 85. Karkazis HC, Polyzois GC. A study of the occlusal plane orientation in complete denture construction. *J Oral Rehab*. 1987; 14:399-404.
 86. Yasaki M. The height of the occlusal rim and the interocclusal distance. *J PROSTHET DENT*. 1961; 11:26-31.
 87. Boucher CO. *Current clinical dental terminology*. 3rd ed. St. Louis: CVMosby. 1982, 175.